

# REVOLUTIONARY SURFACES for EXTRAORDINARY EVENTS

1.800.535.4519 | [palmersnyder.com](http://palmersnyder.com)

•PALMER SNYDER•

tables. chairs. dance floor.

**GROOVE**<sup>®</sup>  
SURFACES

Product: Early American Barnboard  
Photo Courtesy: Aubree Lynn Photography

# THE GROOVE EXPERIENCE

Visually stunning surfaces for life's special events and celebrations. Our Groove solution combines a deep appreciation for fine craftsmanship with cutting-edge technology to create customized flooring that delivers timeless beauty and long-term performance, season after season. Share your vision with our experienced design team – the possibilities are endless.



PRODUCT: WHITE PICKLED CEDAR



PRODUCT: FLAGSTONE

# INSTALLATION PROCESS

## GROOVE VS. TRADITIONAL

Far easier to install than traditional flooring, our composite panels are designed and engineered for the ultimate combination of aesthetic beauty and functional utility.

### ✓ Groove 2-Step Installation

*Patent Pending*

- 1 Wood sills/ stringers are laid out
- 2 Groove plywood floor panel screwed down



### ✗ Tedious 3-Step Installation

- 1 Wood sills/ stringers are laid out
- 2 Plywood subfloor screwed down
- 3 Finished flooring assembled plank by plank



GROOVE...WELCOME TO AMAZING!



*Product: Early American Barnboard  
Photo Courtesy: Bancroft Partners*



*Product: Flagstone  
Photo Courtesy: Bancroft Partners*







Product: Early American Barnboard  
Photo Courtesy: Aubree Lynn Photography





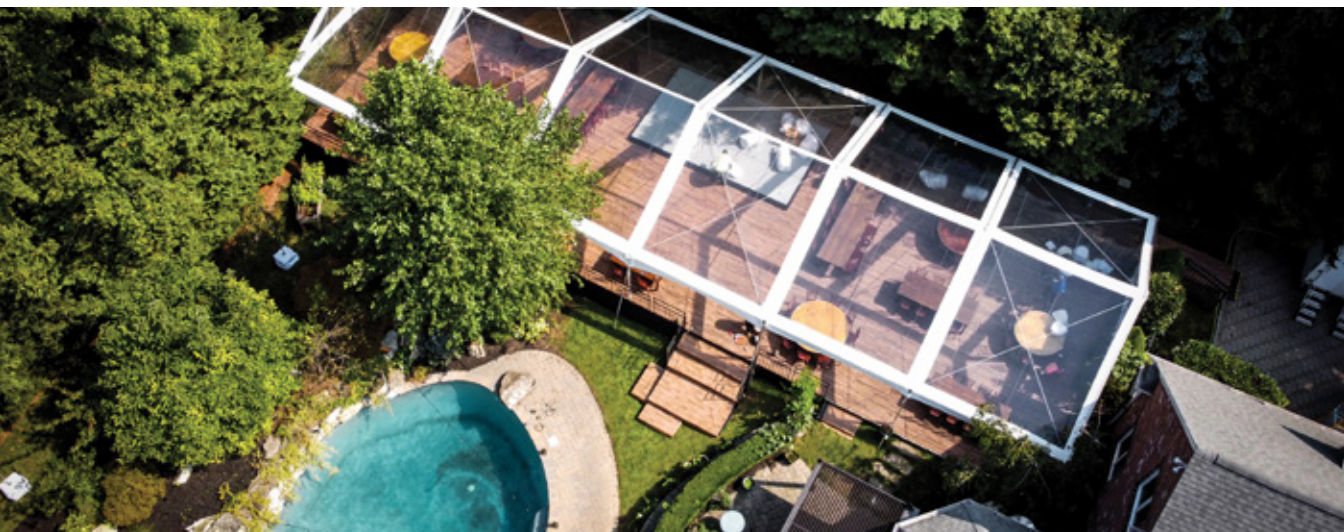


Product: Early American Barnboard  
Photo Courtesy: Aubree Lynn Photography





Product: Early American Barnboard  
Photo Courtesy: A Party Center



Product: Early American Barnboard  
Photo Courtesy: A Party Center



Product: White Pickled Cedar  
Photo Courtesy: Bancraft Partners



Product: White Pickled Cedar  
Photo Courtesy: Brian James Chair Equipment



Product: Gray Barnboard  
Photo Courtesy: Skyline Tent Co.



Product: Early American Barnboard  
Photo Courtesy: Bancraft Partners



Product: White Pickled Cedar  
Photo Courtesy: Christian Oth Studio



Product: Early American Barnboard  
Photo Courtesy: Brian James Chair Equipment



Product: Early American Barnboard  
Photo Courtesy: Bancroft Partners





Product: Gray Barnboard  
Photo Courtesy: Skyline Tent Co.



Product: Flagstone  
Photo Courtesy: Bancroft Partners



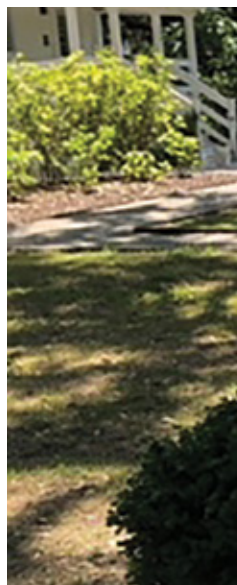
Product: Gray Barnboard  
Photo Courtesy: Skyline Tent Co.



Product: Early American Barnboard  
Photo Courtesy: Aubree Lynn Photography



Product: Gray Barnboard  
Photo Courtesy: Skyline Tent Co.



Product: Flagstone  
Photo Courtesy: Bancraft Partners



*Product: Flagstone  
Photo Courtesy: Bancroft Partners*



*Product: White Pickled Cedar  
Photo Courtesy: Bancroft Partners*



Product: Early American Barnboard  
Photo Courtesy: Bancroft Partners

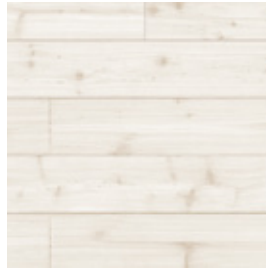
## POPULAR GROOVE SURFACES



EARLY AMERICAN  
BARN BOARD



GRAY  
BARN BOARD



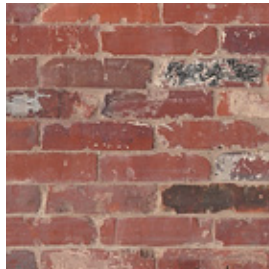
PICKLED  
CEDAR



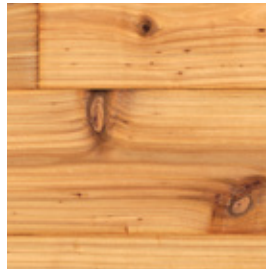
FLAGSTONE



WHITE  
STONE



RECLAIMED  
BRICK



KNOTTY  
CEDAR



GRASS

## CREATE YOUR OWN

### CUSTOM GROOVE SURFACES

We can create any surface. Our specialized manufacturing process enables us to transfer the look and texture you desire onto our easy-to-install panels. Just contact us to share your vision and we'll work with you to bring it to life.

Call **1.800.535.4519** OR Email [sales@palmersnyder.com](mailto:sales@palmersnyder.com)

•PALMER SNYDER•

tables. chairs. dance floor.

1.800.535.4519 | [palmersnyder.com](http://palmersnyder.com)

**GROOVE**<sup>®</sup>  
SURFACES

