

•PALMER SNYDER•

tables. chairs. dance floor.



## PALMER SNYDER MAKES FARM TABLES EASY!

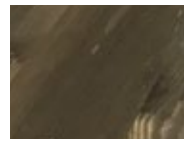
- Faster set up and tear down
- Reduced space in warehouse and on trucks
- Durable edge and leg construction
- Two different leg options
- Order unfinished to stain “in house” for a personalized look
- Made in America



*Solid Wood Folding Legs*

TABLE	DIM (W" x L" x H")	WEIGHT (LBS)
600S Folding Legs w/ Wood Covering	36" x 72" x 30"	71
	36" x 96" x 30"	75
	42" x 72" x 30"	74
	42" x 96" x 30"	78
4x4 Solid Wood Folding Legs	36" x 72" x 30"	95
	36" x 96" x 30"	101
	42" x 72" x 30"	100
	42" x 96" x 30"	104
Farm Table/Wine Barrel Bar	36" x 72" x 35-45"	190

### STAIN COLORS



Standard Dark Stain



Espresso Stain



### FOLDING FARM TABLE FEATURES

- Solid, lightweight pine construction
- Folding legs provide compact storage
- Much less labor than traditional rustic farm tables
- Finish options: Standard Dark Stain (S), Espresso Stain (ES), or Raw/Unstained (B)
- Optional 2-coat UV cured polycoating also available
- Two Sturdy Folding Leg Options:
  - 600S Traditional metal folding leg w/ tapered wood covering
  - 4x4 Solid Wood Folding Leg



### FARM TABLE / WINE BARREL BAR FEATURES

- Farm Table Top combined with our rustic Napa Stack™ Wine Barrels!
- Stain & 2-coat UV cured polycoated top – optional!
- Farm Table Tops also sold separately!

